

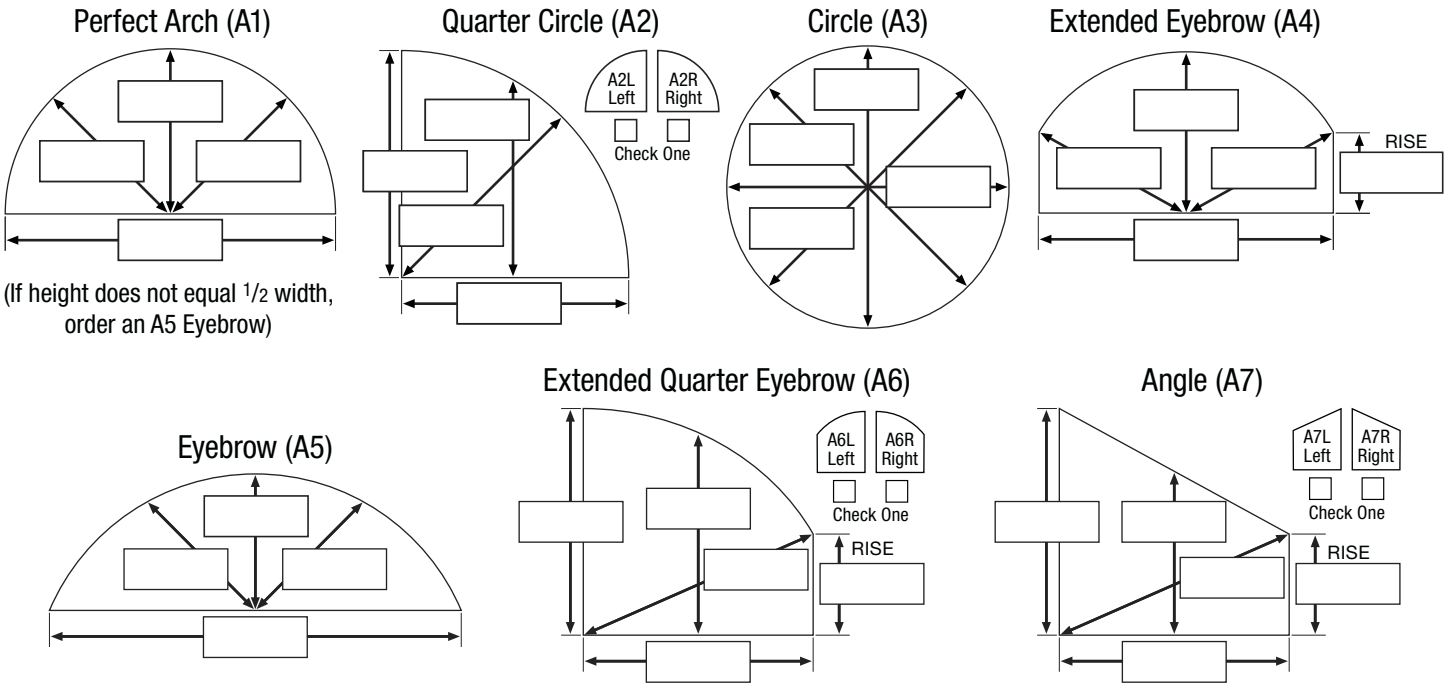


FRAMED STAND-ALONE – Heritage® Specialty Shape Worksheet

Cathedral  and Parabolic  arches require templates. If you have questions about an opening, please call our tech line at 888-727-5230.

1. Record the measurements of the opening for the specialty shape being ordered and enter those measurements below by filling in all the boxes for that shape. Note that the maximum radius for any specialty shape is 42". For additional specifications, see the appropriate section in the Reference Guide.



2. Enter the frame type. **Inside Mount** frame types: Z1, Z2, Z3, Z4, L1, L2
Outside Mount frame types: L1, L2

FRAME TYPE

3. Select one of the following mounting options. Check one:


- IM (Inside Mount).** The factory takes the standard 1/4" total deduction, provided as a 1/8" equal space around the entire specialty shape. Use the width dimension for pricing. Proceed to Step 4.
- OM (Outside Mount).** Complete the **OM Specialty Shape Ordered Dimensions** box below. This will determine the overlap of the shape around the opening and the ordered width for pricing.

ORDERED WIDTH FOR PRICING

Note: With a stand-alone specialty shape over a standard shutter, the frame type and overlap should be the same for both the shape and the standard shutter.

OM Specialty Shape Ordered Dimensions

Stand-Alone Over Shutter Recommended width overlap per side (with 1/4" reveal) for these frames: L1 = 15/8" L2 = 13/8"	Stand-Alone Recommended width overlap (per side): L1 = 15/8" L2 = 13/8" Maximum = 23/4" (per side)	Use the overlap information at left to fill in these four boxes.	Add the left and right overlaps to the measured width from Step 1 to determine ordered width.
		TOP OVERLAP LEFT OVERLAP RIGHT OVERLAP BOTTOM OVERLAP	ORDERED WIDTH FOR PRICING

4. After completing this worksheet, transfer all necessary information to the Specialty Shape order form. Enter the ordered width for pricing in column  on the order form. Attach a copy of this worksheet to the order form. **Important:** All manufacturing sizes will be taken from this worksheet.



Order form page number _____ Opening number _____ Sidemark _____

Fraction	Half	1/32	1/16	3/32	1/8	5/32	3/16	7/32	1/4	9/32	5/16	11/32	3/8	13/32	7/16	15/32	1/2
Calculator:	Measured	1/16	1/8	3/16	1/4	5/16	3/8	7/16	1/2	9/16	5/8	11/16	3/4	13/16	7/8	15/16	1
	Double	1/8	1/4	3/8	1/2	5/8	3/4	7/8	1	11/8	11/4	13/8	11/2	15/8	13/4	17/8	2

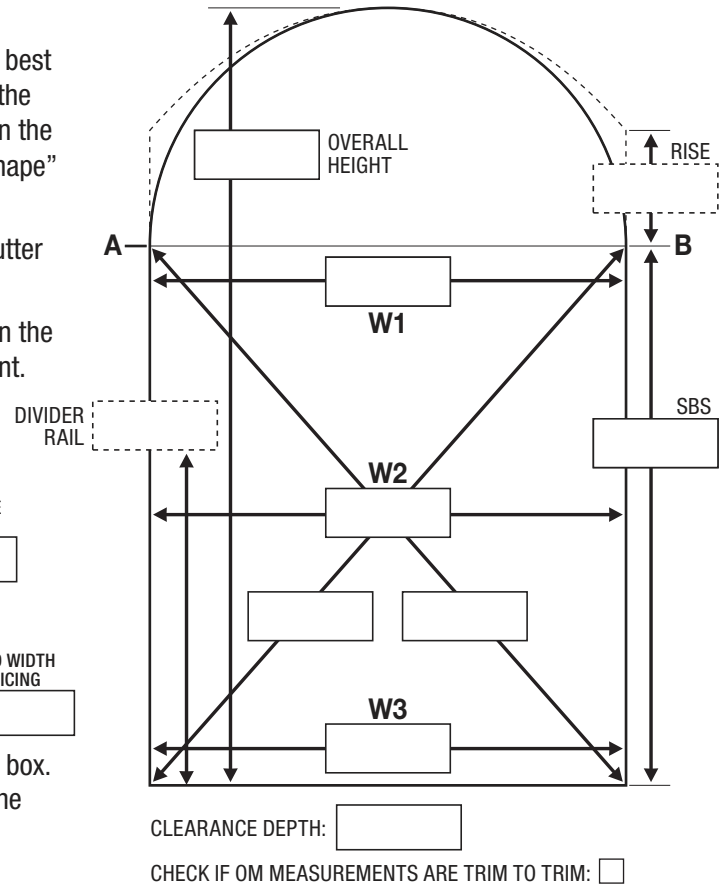
To use this Fraction Calculator, locate the desired value in the "Measured" row, then look up one row for half of that value or down one row for double the value.

FRAMED CONTINUOUS OPENING – Heritage® Specialty Shape Worksheet

Enter all measurements in the boxes on the illustration at right. Refer to the appropriate Reference Guide section for specifications.

Cathedral  and Parabolic  arches require templates. If you have questions about an opening, please call our tech line at 888-727-5230.

1. Measure and record the overall height of the opening.
2. Mark **A** and **B** at the desired location where the specialty shape best meets the bottom shutter. Measure and record the height from the A-B line to the bottom of the opening. Enter this measurement in the **SBS** box. SBS is the abbreviation for “shutter below specialty shape” and is the measured height of the bottom shutter.
3. Measure and record the width of the opening for the bottom shutter at the top, middle and bottom.
4. Measure and record the two diagonals. If the difference between the two measurements is more than 1/2", consider an outside mount.
5. Measure and record the **DIVIDER RAIL** location, if applicable.
6. Measure and record the **RISE** height, if applicable.
7. Enter the frame type of the specialty shape.
 Inside Mount frame types: **Z1, Z2, Z3, Z4, L1, L2**
 Outside Mount frame types: **L1, L2**



8. Select one of the following mounting options. Check one:
 - IM (Inside Mount)**. Standard 1/4" total deduction (1/8" equal space around the entire shape). Use measured dimensions for pricing.
 - OM (Outside Mount)**. Complete the OM Ordered Dimensions box below. This will determine the overlap of the shape around the opening and the ordered width for pricing.

OM Specialty Shape Ordered Dimensions

Recommended width overlap per side (with 1/4" reveal) for these frames:

L1 = 15/8"
L2 = 13/8"

Use the overlap information at left to fill in the boxes below:

OVERALL HEIGHT

TOP OVERLAP

LEFT OVERLAP

SBS

← LEFT MUST EQUAL RIGHT →

ARCH BOTTOM OVERLAP = 0"

RIGHT OVERLAP

HEIGHT OF SPECIALTY SHAPE OPENING (Maximum 42")

ORDERED WIDTH FOR PRICING

Add the left and right overlaps to the widest width (W1, W2 or W3) to determine the ordered width of the specialty shape.

Finished Center Height:

Quarter Circles
Quarter Eyebrows
Angles

Order the bottom shutter using the standard Heritage order form. Important: Include “SBS” with the frame type; e.g., SBS/L1.

1. Refer to the three width measurements (W1, W2 and W3). Using the criteria below, enter the ordered width.
 - Inside Mount:** The smallest width equals the ordered width.
 - Outside Mount:** The largest width plus two overlap factors equals the ordered width.
2. Enter the ordered height of the bottom shutter.
 - Inside Mount:** SBS height equals the ordered height.
 - Outside Mount:** SBS height plus one bottom overlap factor equals the ordered height. (If stopping on the sill, add no overlap.)
3. After completing this worksheet, transfer all necessary information to the appropriate Specialty Shape and Heritage order forms. Attach copies of this worksheet to both the Specialty Shape and standard order forms.

Order form page number _____ Opening number _____ Sidemark _____

Fraction	Half	1/32	1/16	3/32	1/8	5/32	3/16	7/32	1/4	9/32	5/16	11/32	3/8	13/32	7/16	15/32	1/2
Measured		1/16	1/8	3/16	1/4	5/16	3/8	7/16	1/2	9/16	5/8	11/16	3/4	13/16	7/8	15/16	1
Double		1/8	1/4	3/8	1/2	5/8	3/4	7/8	1	1 1/8	1 1/4	1 3/8	1 1/2	1 5/8	1 3/4	1 7/8	2

To use this Fraction Calculator, locate the desired value in the “Measured” row, then look up one row for half of that value or down one row for double the value.